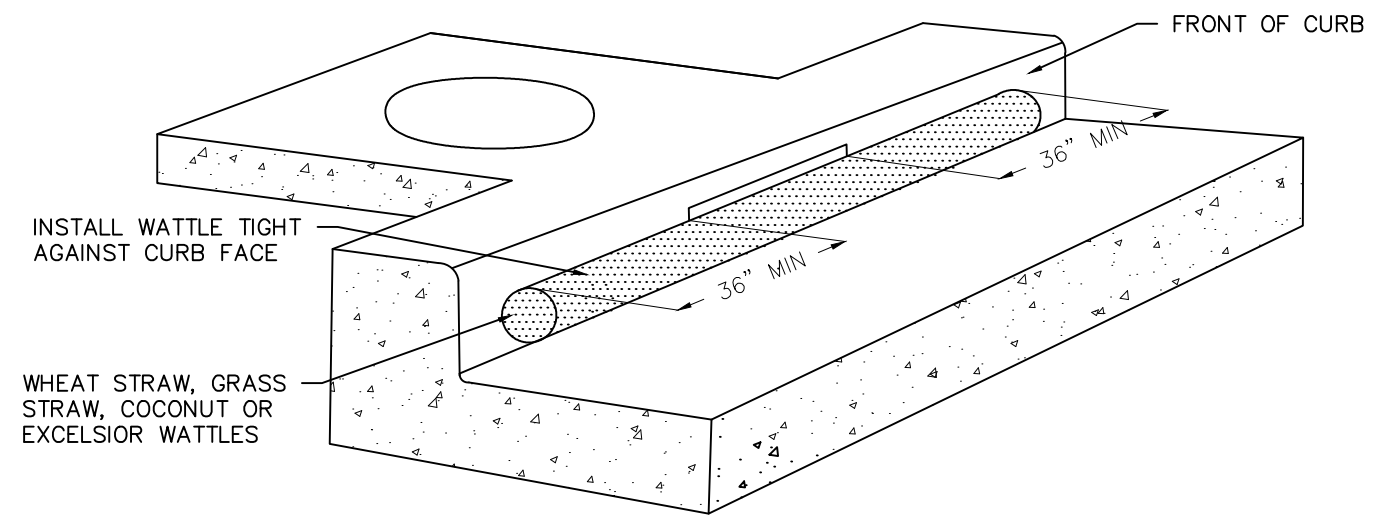


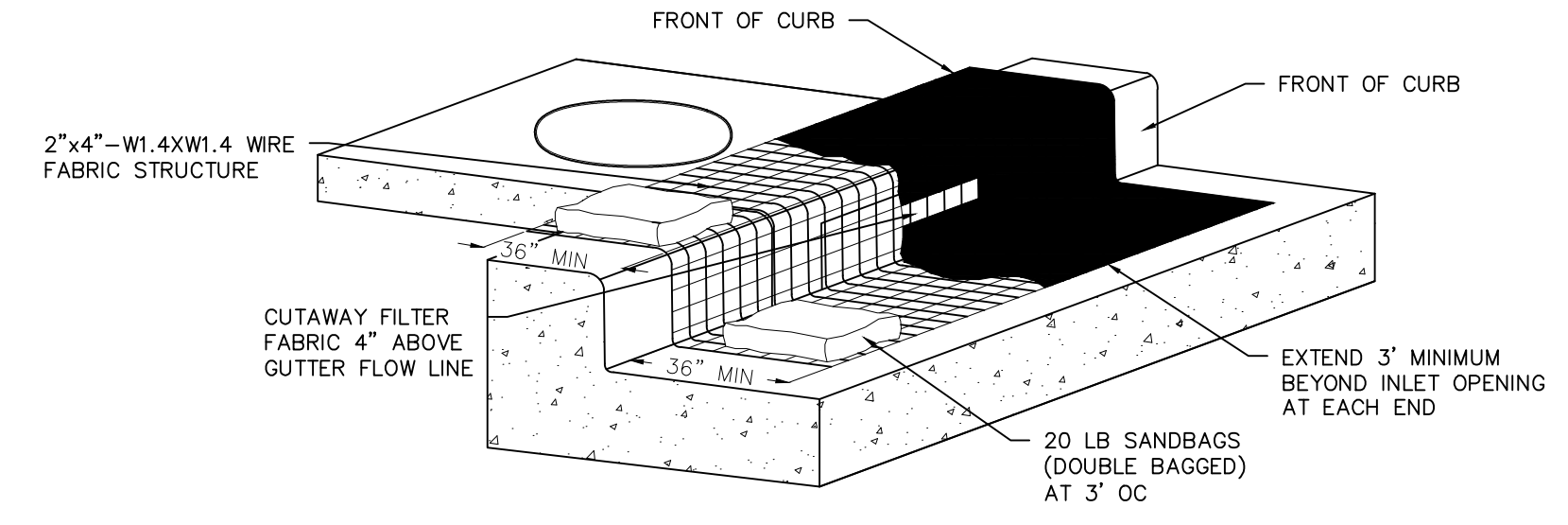
- NOTES:**
- POSTS TO BE SET AT THREE (3) FEET MAXIMUM SPACING. IF FACTORY PREASSEMBLED FENCE WITH SUPPORT NETTING IS USED, SPACING OF POST MAY BE INCREASED TO EIGHT (8) FEET MAXIMUM.
 - WHEN TWO SECTIONS OF FILTER CLOTH ADJOIN EACH OTHER THEY SHALL BE OVERLAPPED SIX (6) INCHES AT THE POSTS AND FOLDED.

1
FILTER FABRIC FENCE DETAIL
NOT TO SCALE



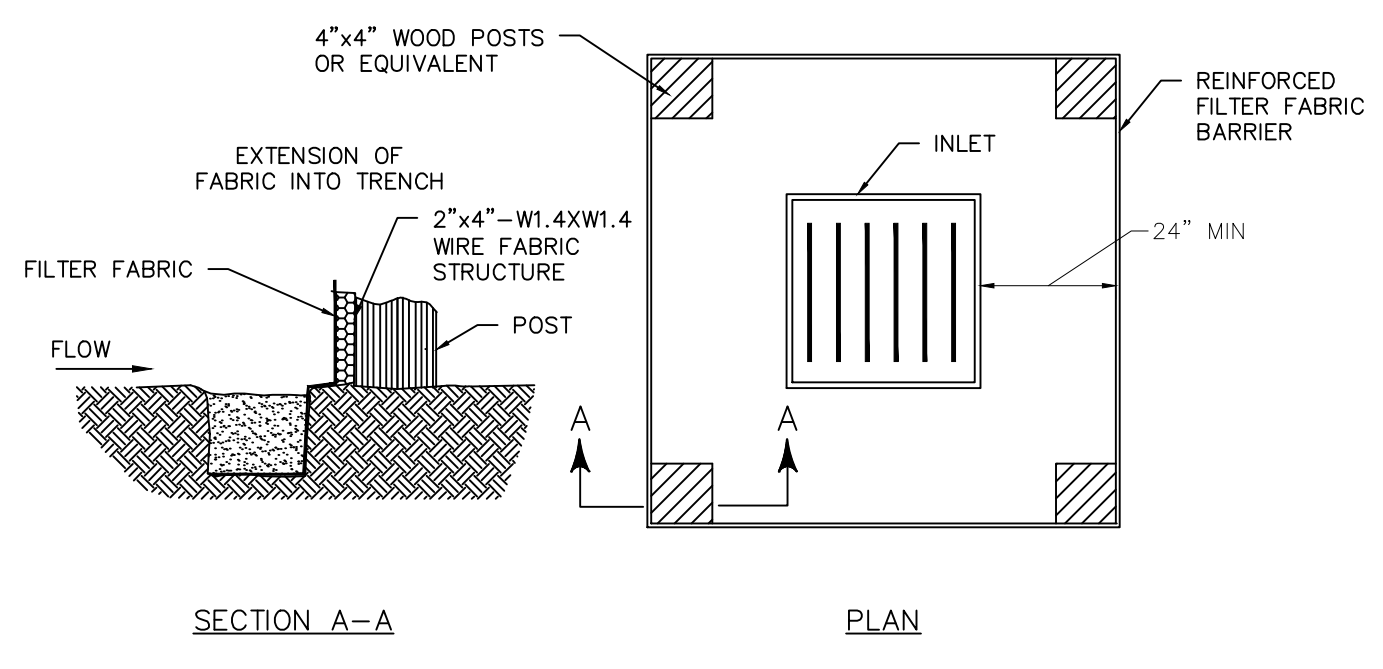
- NOTES:**
- ONLY ALLOWED USE OF APPLICATION IS ON CURB AND GUTTER INLETS.
 - INSTALL WATTLE ALONG INLET WITH WATTLE EXTENDING A MIN OF 36" BEYOND INLET OPENINGS IN EACH DIRECTION.
 - WATTLE MUST BE INSTALLED TIGHTLY AGAINST CURB. MAY REQUIRE ADDITIONAL MEASURES TO ENSURE WATTLE REMAINS TIGHT AGAINST CURB, SUCH AS USING ZIP TIES TO SECURE WATTLE TO INLET'S TRASH BARS OR USING SANDBAGS TO WEIGHT DOWN WATTLE.
 - REPLACE WATTLE AS NECESSARY TO PREVENT SEDIMENT FROM ENTERING THE STORM SYSTEM.

2
WATTLE INLET PROTECTION BARRIER DETAIL
NOT TO SCALE

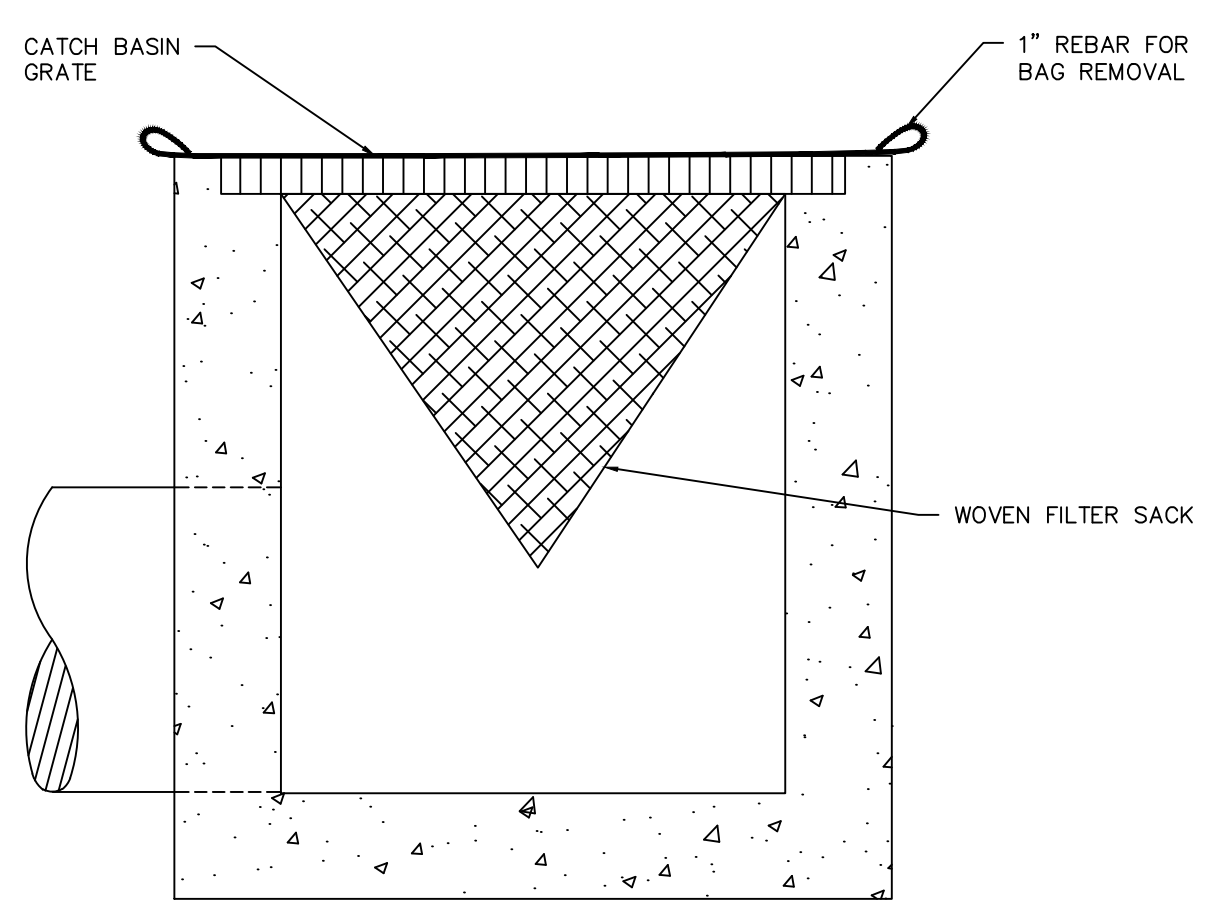


- NOTES:**
- TO HOLD THE FILTER DIKE IN PLACE, 20 LB SANDBAGS SHALL BE USED AT 3' O.C.
 - MINIMUM 3" OVERLAP OF FILTER FABRIC WHERE SPLICE IS NECESSARY.
 - A SECTION OF FILTER FABRIC SHALL BE REMOVED AS SHOWN ON THIS DETAIL OR AS DIRECTED BY THE ENGINEER OR DESIGNATED REPRESENTATIVE. FABRIC MUST BE SECURED TO WIRE BACKING WITH CLIPS OR HOG RINGS AT THIS LOCATION.
 - DAILY INSPECTION SHALL BE MADE BY THE CONTRACTOR AND SILT ACCUMULATION MUST BE REMOVED WHEN DEPTH REACHES 2". INLET PROTECTION SHALL BE REPLACED AS NECESSARY DURING CONSTRUCTION DUE TO DAMAGE OR DETERIORATION (SUBSIDIARY TO INLET PROTECTION).
 - CONTRACTOR SHALL MONITOR THE PERFORMANCE OF INLET PROTECTION DURING EACH RAINFALL EVENT AND ONLY REMOVE INLET PROTECTION IF DIRECTED BY THE CITY OR IF CONTRACTOR OBSERVES AN IMMINENT THREAT OF FLOODING OF SURROUNDING PROPERTY.
 - INLET PROTECTIONS SHALL BE REMOVED AS SOON AS THE SOURCE OF SEDIMENT IS STABILIZED.

3
FILTER FABRIC INLET PROTECTION BARRIER DETAIL
NOT TO SCALE

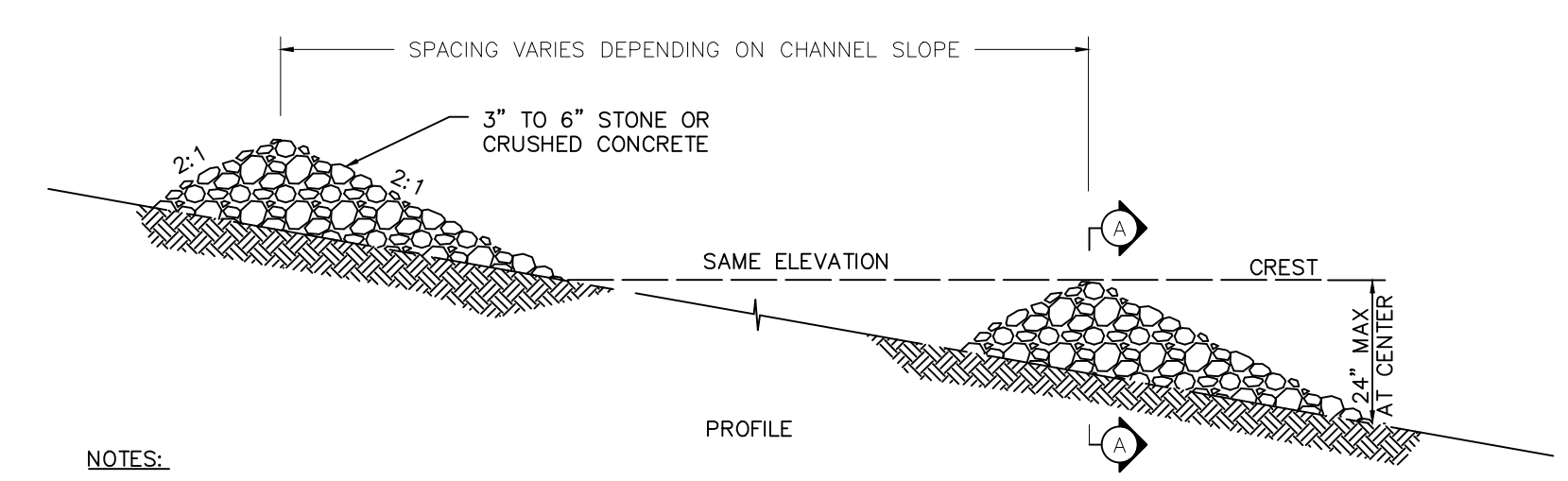


4
STAGE I INLET PROTECTION BARRIER DETAIL
NOT TO SCALE

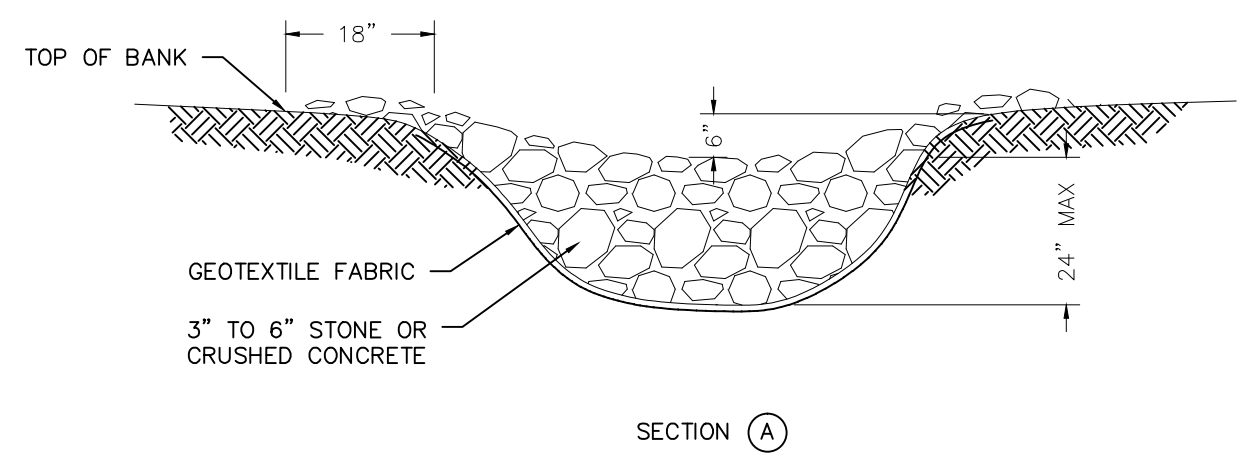


- NOTES:**
- REPLACE SACK AS NECESSARY TO PREVENT SEDIMENT FROM ENTERING THE STORM SYSTEM.

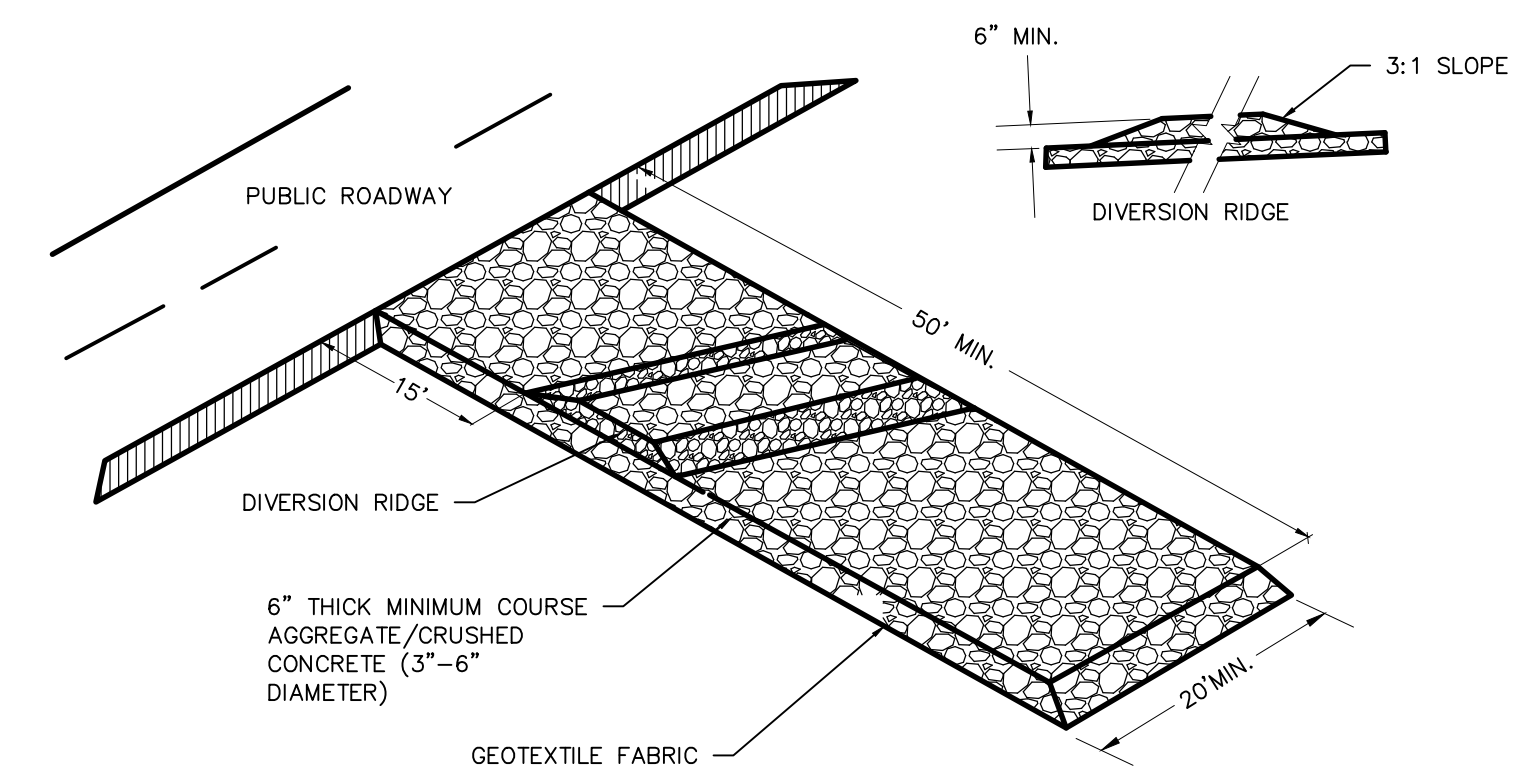
5
CATCH BASIN INSERT DETAIL
NOT TO SCALE



- NOTES:**
- THE STONE SHALL BE KEYED INTO THE CHANNEL BANKS AND BE EXTENDED BEYOND THE ABUTMENTS A MINIMUM OF 18" TO PREVENT FLOW AROUND DAM.
- | STANDARD STONE CHECK DAM | |
|--------------------------|---------|
| SLOPE | SPACING |
| 2% or less | 80 feet |
| 2.1% to 4% | 40 feet |
| 4.1% to 7% | 25 feet |
| 7.1% to 10% | 15 feet |



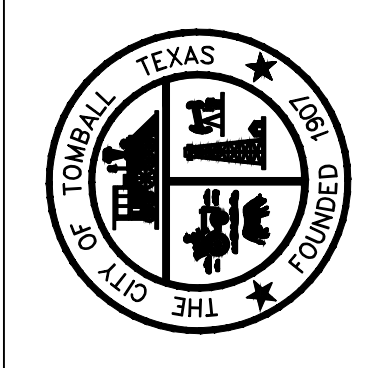
6
ROCK CHECK DAM DETAIL
NOT TO SCALE



- NOTES:**
- A STONE STABILIZED PAD SHALL BE LOCATED AT ANY POINT WHERE TRAFFIC WILL BE LEAVING A CONSTRUCTION SITE TO A PUBLIC RIGHTS-OF-WAY, STREET, ALLEY, SIDEWALK, PARKING AREA, OR ANY OTHER AREA WHERE THERE IS A TRANSITION FROM BARE SOIL TO A PAVED AREA.
 - THE EXIT SHALL BE MAINTAINED IN A CONDITION WHICH WILL PREVENT TRACKING OR FLOW OF MUD ONTO PUBLIC RIGHTS-OF-WAY. THIS MAY REQUIRE PERIODIC TOP DRESSING WITH 3-6 INCH STONE OR CRUSHED CONCRETE, AS CONDITIONS DEMAND, AND REPAIR AND/OR CLEANOUT OF ANY STRUCTURES TO TRAP SEDIMENT. ALL MATERIALS SPILLED, DROPPED, WASHED, OR TRACKED FROM VEHICLES OR SITE ONTO ROADWAYS OR INTO STORM DRAINS MUST BE REMOVED IMMEDIATELY.

7
CONSTRUCTION EXIT DETAIL
NOT TO SCALE

NO.	DATE	REVISION



CITY OF TOMBALL
STORM WATER POLLUTION PREVENTION DETAILS

APPROVED BY CITY OF TOMBALL
ENGINEERING DEPARTMENT
Wesley Stolt
CITY ENGINEER
EFFECTIVE MARCH 17, 2021